

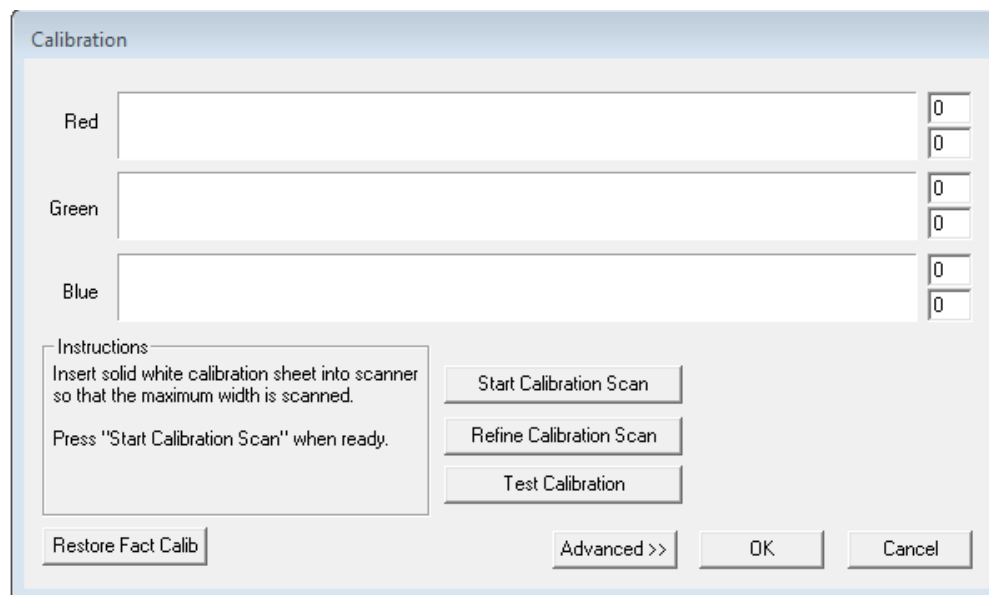
NeuraScanner II - Film Scanning Kit

Introduction:

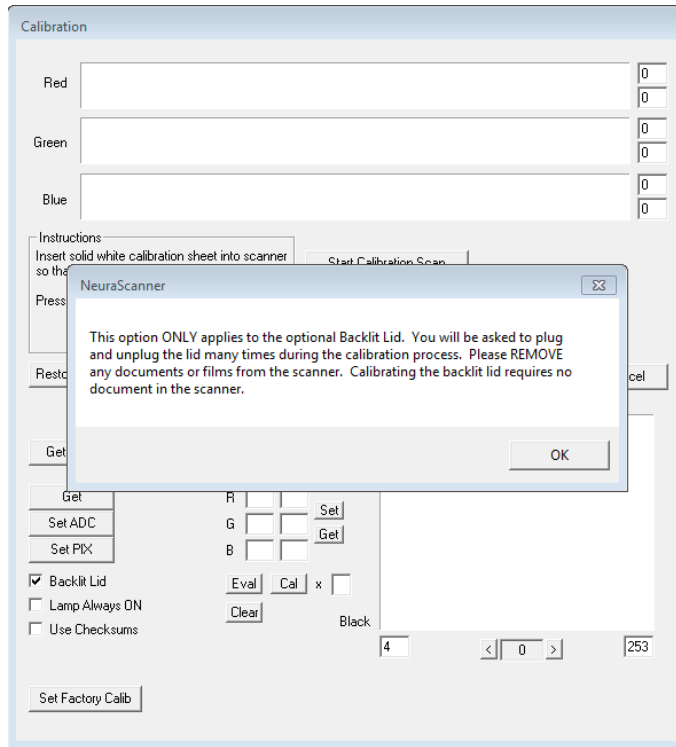
The film scanning kit contains a backlit lid and power supply for the lid's light source. In order to use, the scanner must be calibrated to the lids light source. When switching from the film scanning lid to the default paper scanning lid, the calibration must be set back to use the internal light source of the scanner.

To Calibrate for Film Scanning Lid:

From the main menu, select **File -> Calibrate**.



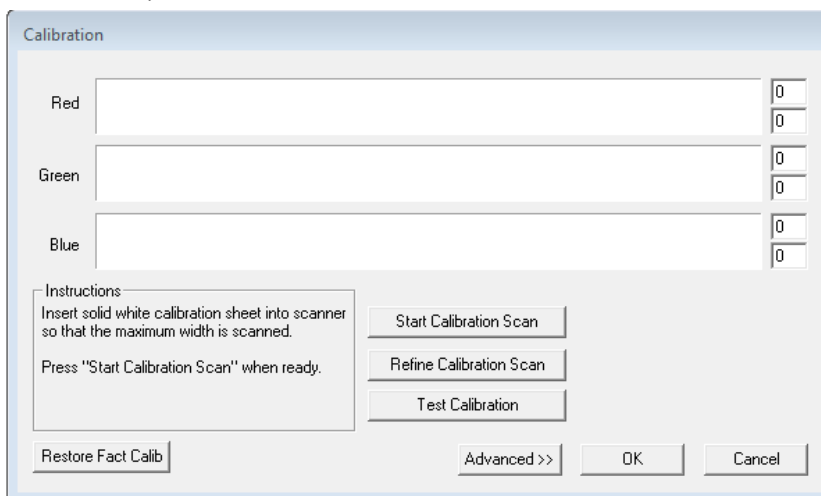
When the calibration panel displays, select **“Advanced”** button, which will extend the panel to include the **“backlit lid”** checkbox option.



Check this box and follow the on screen instructions to calibrate the sensor for the film scanning “backlit” lid. These calibration values are saved in the scanner and will be used until changed by the user in the calibration panel.

To Calibrate for Paper Scanning Lid:

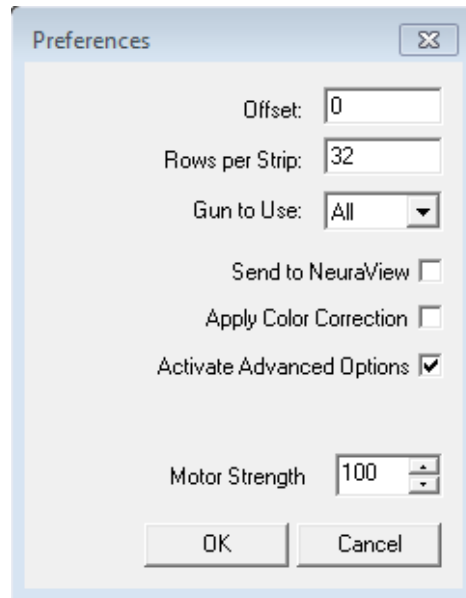
From the main menu, select **File -> Calibrate**. Click the **“Restore Fact Calib”** button.



This will load the calibration for the internal light source as set by the factory. Once the Factory Default Calibration is restored, it will remain in effect until changed by the user in the calibration panel.

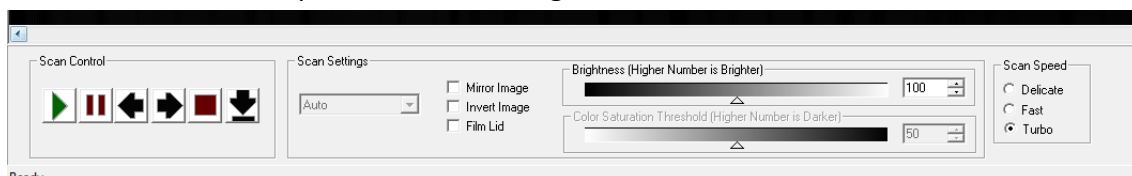
Settings to Enable Film Scanning:

In order to scan film using the backlit lid, the **Advanced Scanning Options** must be enabled to display scanning options. Once these options are visible, they will continue to be displayed each time the application starts. From the main menu select **Edit -> Preferences**. In the Preferences panel, check **“Activate Advanced Options”** checkbox, and click **OK**.



To start scanning film using the film scanning lid:

- Make sure the film scanning lid is placed on the scanner and plugged in.
- Check the “Film Lid” Option in Scan Settings.



- Set the width to a maximum of 11.5”.
- Select scan settings as normal. (Color Scanning is not supported with the film lid)
- Scan